



**Source
BioScience**

All Services Brochure

Improving Life Science Research,
Drug Development and Patient Care.



Your Laboratory Service Partner for
Cellular Pathology • Digital Pathology and AI • Genomics
• Precision Medicine • Stability Storage

A word from Jay LeCoque



"At Source, our single focus is on improving patient diagnosis, management, and care. Our core strength resides in our ability to mobilize our vast resources to respond to emerging needs, whether by boosting our histopathological analysis capacity to meet the rapidly increasing demand at local hospitals or creating an altogether novel infectious disease testing unit to meet the COVID-19 global public health emergency."

Jay LeCoque
Executive Chairman and CEO

Our Locations

Nottingham

1 Orchard Place, Nottingham Business Park
Nottingham, NG8 6PX. United Kingdom
+44 (0) 115 973 9012

Rochdale

John Boyd Dunlop Drive, Kingsway Business Park,
Rochdale, OL16 4NG. United Kingdom
+44 (0) 115 973 9012

Chichester

Units 3 & 4, The Courtyard Lab
Vinnetrov Business Park, Vinnetrov Road,
Chichester, PO20 1QH. United Kingdom
+44 (0) 115 973 9012

London

6 St John's Place, London EC1M 4NP. United Kingdom
+44 (0) 115 973 9012

Cambridge

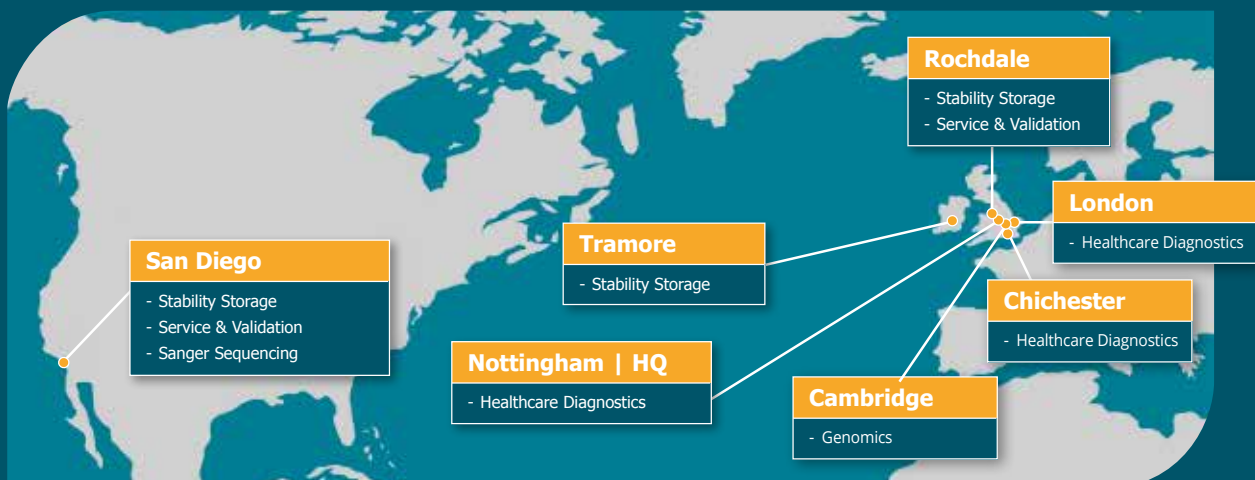
Endeavour House, Chivers Way, Histon,
Cambridge, CB24 9ZR. United Kingdom
+44 (0) 115 973 9012

Tramore

Riverstown 5 Complex, Tramore,
Co. Waterford. Republic of Ireland
+353 (0) 51 338435

USA

6696 Mesa Ridge Road, San Diego,
CA 92121. USA
(562)-944-4466





Healthcare

Source BioScience provides an end-to-end clinical healthcare service from histopathology, including digital pathology and AI, through to molecular diagnostics services; bringing a unique clinical workflow for the delivery of precision therapeutics.

Source LDPATH, a part of Source BioScience, has built a significant and growing network of specialist consultant pathologists, all registered with the Royal College of Pathologists and General Medical Council. We offer industry leading pathology services with a focus on digital pathology and AI.

Our Services:

Histopathology Services:

- Wet surgical specimens
- Pre-prepared blocks or slides

Our expertise in histopathology, coupled with the latest technologies in molecular diagnostics, enables us to provide a comprehensive service to support your requirement for specialised diagnostics.

Diagnostic services:

- Mutational Analysis (e.g KRAS/BRAF/EGFR)
- NGS gene panel targeted sequencing
- Personalised Medicine (e.g ToxNav, EndoPredict)
- Hormone Receptor Testing
- Routine and Specialist Immunohistochemistry Assays (IHC)
- In-situ Hybridisation (ISH)
- Circulating Tumour cell assessment (CTC)
- Methylation Analysis - MLH1 promoter hypermethylation



Scan to view our comprehensive list of diagnostic services

Digital Pathology and AI

Source LDPATH provides a comprehensive digital pathology integration system for streamlined digitalisation, efficient workflow, local system interfacing, data storage and administrative support.

- Scanner acquisition and set up
- Slide data capture
- Reporting capacity
- Monitoring reporting progress including ALW, TAT
- Scanner training and maintenance – service contracts included
- Digital validation of pathologists
- Access to industry leading Laboratory Information Management System

1. Streamline pathology reporting services
2. Increase the accuracy of patient diagnosis through AI
3. Reduce turnaround time of reporting



Genomics

Market-leading providers of genomic services, serving Biotechnology organisations, Pharmaceutical companies and Academia in both the UK and US. We employ the latest technologies and leading expertise to assist you with your genomic projects, including Illumina's NovaSeq, NextSeq500 and MiSeq, with services operating to ISO 9001:2015.

Our Services:

- Sanger Sequencing
- Illumina NGS
- Nanopore NGS
- Spatial transcriptomics
- High throughput extractions
- TSO 500 / Biomarker Panels
- Clinical Trial support
- Bioinformatics
- Olink proteomics panels / protein biomarker screening



Scan to view our comprehensive list of genomic services

Top Tip: Easy online portal and eVouchers available to purchase for tube and plate sequencing providing great savings and flexibility to you and your colleagues.



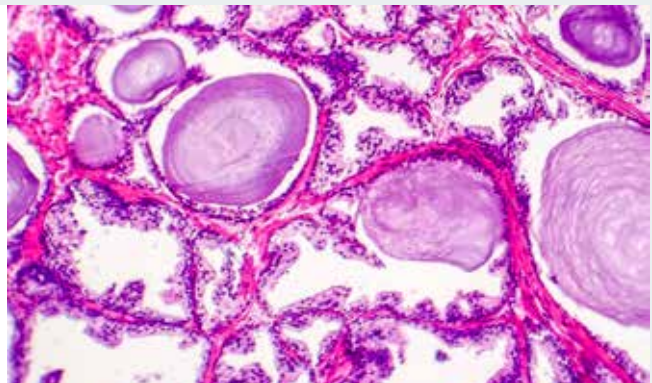
Clinical Trials

For several decades we have worked internationally with leading Clinical Research Organisations and across the pharmaceutical sector to aid the development of drug discovery. We provide specialist histology, immunocytochemistry, genomics and bespoke analytical services to GCP and ISO 15189:2012 standards.

We act as a **Central Laboratory** for clinical trials and drug discovery projects, with expertise in genomics and protein biomarker analysis. Offering an extensive analytical portfolio, we work from pre-clinical - phase 3 clinical trials, partnering with organisations ranging from global pharmaceutical companies to smaller biotechnology organisations and CROs.

Histology

Including: tissue processing, tissue embedding (including paraffin blocks and tissue arrays), tissue sectioning, digital imaging.



Genomics

Including: Nucleic acid extraction, Sanger Sequencing, Illumina NGS, Spatial transcriptomics, RT-PCR, Genotyping, TSO/Biomarker panels, Bioinformatics.



Precision Medicine

Including: gene targeted mutational analysis, specialist IHC, ISH and toxicity testing.



Stability Storage Solutions

Source BioScience has over 30 years of experience offering a full range of Stability Storage and validation Solutions with FDA-registered and cGMP, MHRA, HPRA and DEA compliant equipment. Our extensive Quality Management System provides overall management, accuracy and control over the Stability and Storage of your samples under specified ICH or non-ICH conditions.

Our Field Service Validation Engineers provide uniformity enhancement to ensure all equipment is performing optimally. All data acquisition systems are fully configurable to customer requirements, conforming with 21 CFR Part 11 and ensure data integrity throughout the validation process.

Outsourced Stability Storage

- Stability Storage
- Photostability
- Thermal Cycling
- Disaster Recovery - Contingency Storage

Validation Services

- Service Level Agreements
- Validation and Calibration

Why Outsource to us?



Quality Systems/
Accreditations



Data Logging
Monitoring
Facilities



Equipment
Management
& Maintenance



Expertise



Call Out
Response



Source BioScience is a leading international provider of integrated state-of-the-art laboratory services, supporting clients in the healthcare industry, pharmaceutical sector and life science academia, with a focus on improving patient diagnosis, management and care.



To find out more get in touch



+44 (0) 115 973 9012



+353 (0) 51 338435



(562)-944-4466

enquiries@sourcebioscience.com

[sourcebioscience.com](https://www.sourcebioscience.com)



Scan the QR code
to visit the website