

## Genomic Services

**Your Laboratory Services Partner  
for Genomics**

**Source BioScience offers genomic services to global pharmaceutical, biotechnology, life science and academic communities using the latest Illumina NovaSeq 6000, NextSeq 500 and MiSeq technologies in addition to Oxford Nanopore and other cutting edge instruments and technologies, with services accredited to ISO 9001:2015.**

**Our services include:**

- Sanger Sequencing
- Illumina NGS
- Nanopore NGS
- Spatial transcriptomics
- High throughput extractions
- TruSight Oncology 500 assay and other Biomarker Panels
- Clinical Trial support
- Bioinformatics



**MiSeq**



**NovaSeq**



**NextSeq**

# Sanger Sequencing

**Our Sanger Sequencing SpeedREAD service delivers the fastest turnaround times, making us your perfect partner for high-quality sequencing.**

With a quick and easy to use ordering process, free use of 40 stock primers and direct access to the local lab, our Sanger Sequencing Service takes the hassle away.



**Buy  
eVouchers**

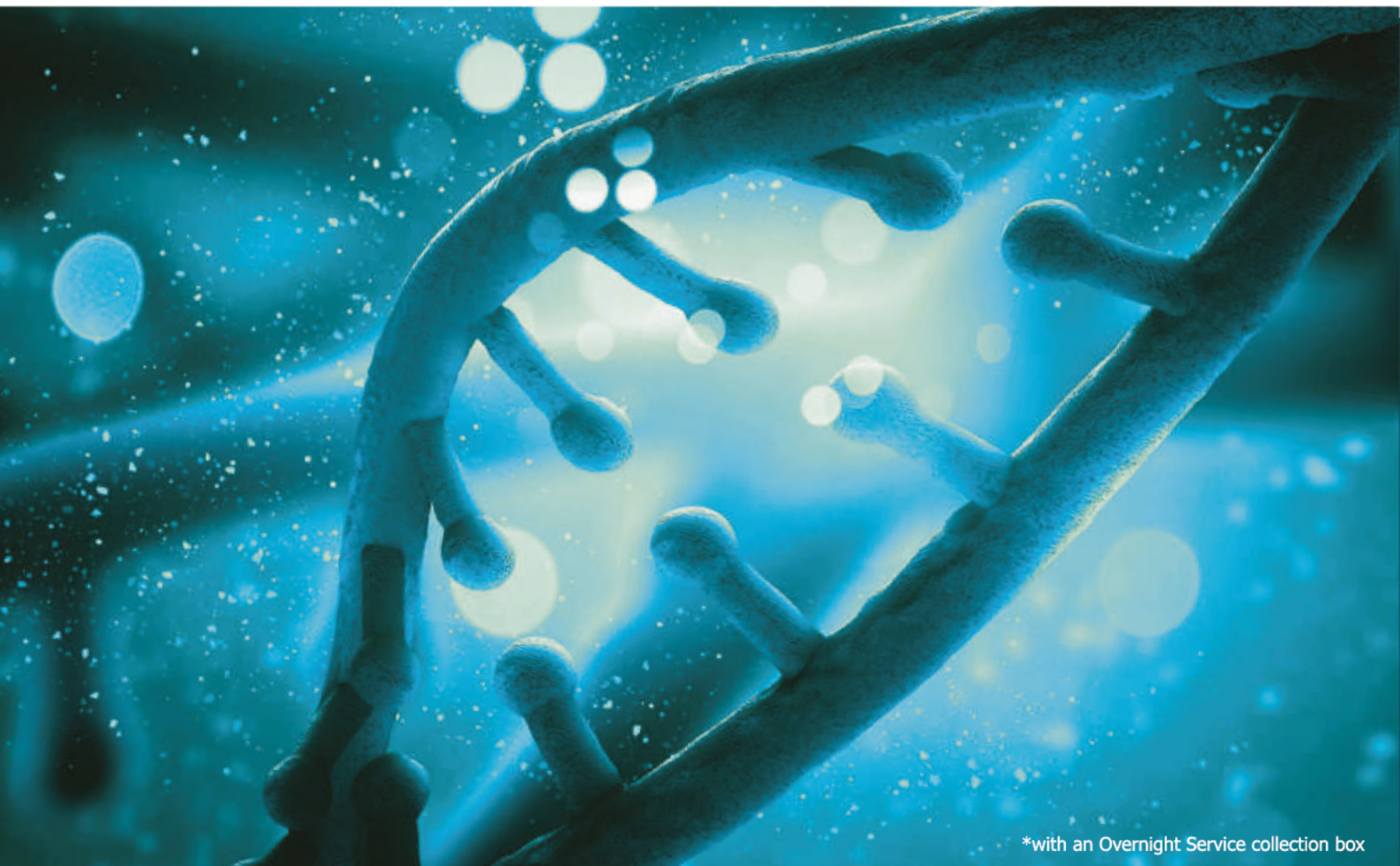
...



**Submit  
Your Order**

## **Our Sequencing Service offers:**

- Results by 9am\* the next day with our Overnight Service™
- Sequencing reads up to 1,400bp
- Automated data delivery through SpeedREAD™
- Easy online ordering process
- FREE collection via our network of collection boxes or by using our FREEPOST labels
- Access to 40 Source BioScience Stock primers free of charge
- Overnight Service™ collection boxes
- Free sample and primer storage
- Prepaid sequencing eVouchers - for ease of use and exceptional pricing
- Use of adapted protocol for secondary structure or GC rich regions at no extra charge
- Free troubleshooting and repetition of failed reactions



\*with an Overnight Service collection box



# Next Generation Sequencing

---

We offer standardised Next Generation Sequencing packages or fully bespoke NGS services, completed by our dedicated team of highly-qualified and experienced Scientists, through a robust and highly audited quality management system. Whether your project is large or small, simple or complex, we will be able to help.



## Whole Exome Sequencing:

Whole exome sequencing (WES) targets the protein-coding regions of the genome and as it requires sequencing of only 1-2% of the genome, is much more cost-effective than sequencing the whole genome. Source Genomics offers a flexible whole exome sequencing package to suit your research needs including enrichment, library preparation and tailored sequencing depth.



## Whole Genome Sequencing:

We provide whole genome sequencing for both large (Mammalian/Plant) and small (Bacterial) genomes, providing advice on the most appropriate library preparation and sequencing approach for your project.



## RNA Sequencing:

We offer analysis of different RNA species (coding, non-coding and small transcripts) from a lengthy range of starting materials. No long reads? We provide solutions for a wide variety of RNA sequencing techniques, including Total RNA, mRNA, small RNA and single cell RNA sequencing.



## Metagenomics:

We offer both targeted and shotgun metagenomic sequencing options. Our targeted workflow amplifies specific variable regions and can be used to generate taxonomic profiles, through our bioinformatics pipelines. Shotgun metagenomics utilises Illumina NovaSeq sequencing for unbiased analysis of microbial communities by assessing the complete genomic material from a sample.



## Targeted Sequencing:

Targeted sequencing is highly cost-effective as an alternative to whole genome sequencing. Targeted sequencing is at the forefront of cancer research and treatment. By sequencing known genes of clinical relevance, mutations can be detected which may influence response to a treatment.



## Run-Only Sequencing:

Whilst we have streamlined NGS packages for more commonly used applications, we understand that many researchers have specific library preparations and bespoke sample handling requirements and so only require the sequencing of fully prepared NGS libraries.

Source Genomics offers Run-only sequencing of pre-made libraries on the Illumina NovaSeq, NextSeq and MiSeq instruments, providing a full range of sequencing read modes and data outputs.

## Molecular Genetics

---

**Customise your Sanger Sequencing experience with Molecular genetics solutions from a leading DNA sequencing provider. This fully customisable service allows you to streamline your workflow and extend your bench with your choice of PCR and Sanger services with data delivered in as few as 3 days with our pre-developed assays.**

These services support a wide-range of applications including targeted microbial/fungal sequencing, NGS data confirmation, antibody heavy/light chain sequencing, mutation detection analysis, cell bank characterization, SNP genotyping and more.

### **Genotyping services:**

- CNV Genotyping
- Microsatellite Genotyping
- Microarray Services
- SNP Microarrays
- Gene Expression Microarrays

## Nucleic Acid Extractions

---

**Our high-throughput technology enables us to offer great value for money, whilst ensuring reliable and consistent quality of DNA.**

Our flexible and custom service provides peace of mind whether your project is large or small.

### **We routinely extract from the following sources:**

- Whole blood
- Buccal swabs
- Mammalian cell lines/primary cells (cell pellets)
- Plant and animal tissue
- Bacteria
- Saliva (DNA only)
- FFPE tissue (DNA only)

## Bioinformatics

---

**Source Genomics offers a range of bioinformatic & computational analysis options to aid researchers in the interpretation of their data.**

We understand the need for biological and clinical data analysis and support.

- Variant Calling
- Genome Assembly
- Gene Expression
- Transcriptome Assembly
- Taxonomical Classification
- Custom Analysis

---

**We also offer:**

---



**Precision Medicine**



**Stability Storage**



**Histopathology**



**Unrivalled  
Data Quality**



**Rapid  
Turnaround Times**



**Scalable**



**Global Provider for  
ISO-Accredited Services**

**Source BioScience.  
Improving Life Science Research,  
Drug Development  
and Patient Care.**

---

**UK**

Endeavour House,  
Chivers Way,  
Histon,  
Cambridge  
CB24 9ZR  
+44 (0) 115 973 9012

**USA**

6696 Mesa Ridge Road  
Suite B  
San Diego  
CA 92121  
+1-562-944-4466